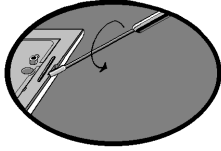


### Instructions for Fitting Screwless Accessories

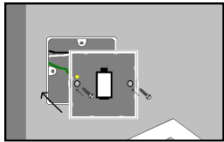
1. After removing from packaging place the product face down onto a soft cloth or towel. Remove the decorative front plate by inserting the tip of a screwdriver into one of the short slots (see diagram) so the screwdriver is between the inside edge of the decorative plate and the outer edge of the clear plastic. Apply gentle pressure and twist the screwdriver one quarter turn (as shown). Lift out switch assembly.



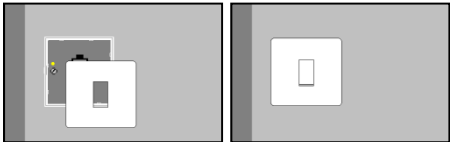
2. Ensure wall is flat around wall box by sanding away any uneven material.

3. Connect wires to appropriate terminals on rear of switch assembly including the earth wire to the earth terminal on the metal back plate.

4. Use fixing screws provided to fix switch assembly onto wall box. Tighten screws evenly a little at a time until just tight enough to prevent movement of the back plate. Do not over-tighten screws as this will deform the plastic clip on the switch assembly, inhibiting the faceplate from being securely fixed.



5. Pick up decorative front plate carefully and push into place, pressing gently on each side to ensure the front plate has engaged with the plastic clips on the switch assembly.



N.B. If the decorative front plate needs to be removed place the tip of a screwdriver into one of the slots on either side of the product and gently rotate screwdriver until clip releases front plate.

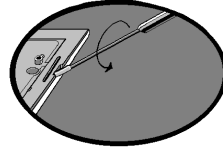
#### REG NUMBER: SCREW

Doyle & Tratt Products Ltd, Carylls Lea, Faygate,  
Horsham, W. Sussex, RH12 4SJ, UK. +44 (0)1293 223333  
Varilight Europe Kft, 2600 Vác, Althann Mihály Frigyes  
utca 2, Hungary.



### Instructions for Fitting Screwless Accessories

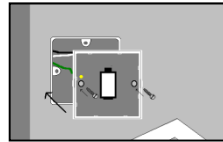
1. After removing from packaging place the product face down onto a soft cloth or towel. Remove the decorative front plate by inserting the tip of a screwdriver into one of the short slots (see diagram) so the screwdriver is between the inside edge of the decorative plate and the outer edge of the clear plastic. Apply gentle pressure and twist the screwdriver one quarter turn (as shown). Lift out switch assembly.



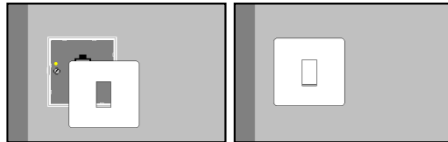
2. Ensure wall is flat around wall box by sanding away any uneven material.

3. Connect wires to appropriate terminals on rear of switch assembly including the earth wire to the earth terminal on the metal back plate.

4. Use fixing screws provided to fix switch assembly onto wall box. Tighten screws evenly a little at a time until just tight enough to prevent movement of the back plate. Do not over-tighten screws as this will deform the plastic clip on the switch assembly, inhibiting the faceplate from being securely fixed.



5. Pick up decorative front plate carefully and push into place, pressing gently on each side to ensure the front plate has engaged with the plastic clips on the switch assembly.



N.B. If the decorative front plate needs to be removed place the tip of a screwdriver into one of the slots on either side of the product and gently rotate screwdriver until clip releases front plate.

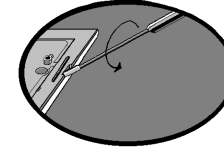
#### REG NUMBER: SCREW

Doyle & Tratt Products Ltd, Carylls Lea, Faygate,  
Horsham, W. Sussex, RH12 4SJ, UK. +44 (0)1293 223333  
Varilight Europe Kft, 2600 Vác, Althann Mihály Frigyes  
utca 2, Hungary.



### Instructions for Fitting Screwless Accessories

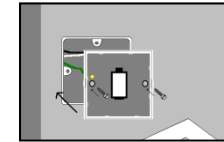
1. After removing from packaging place the product face down onto a soft cloth or towel. Remove the decorative front plate by inserting the tip of a screwdriver into one of the short slots (see diagram) so the screwdriver is between the inside edge of the decorative plate and the outer edge of the clear plastic. Apply gentle pressure and twist the screwdriver one quarter turn (as shown). Lift out switch assembly.



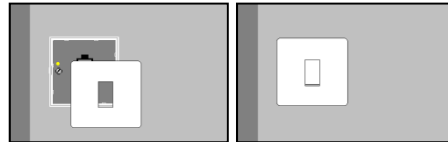
2. Ensure wall is flat around wall box by sanding away any uneven material.

3. Connect wires to appropriate terminals on rear of switch assembly including the earth wire to the earth terminal on the metal back plate.

4. Use fixing screws provided to fix switch assembly onto wall box. Tighten screws evenly a little at a time until just tight enough to prevent movement of the back plate. Do not over-tighten screws as this will deform the plastic clip on the switch assembly, inhibiting the faceplate from being securely fixed.



5. Pick up decorative front plate carefully and push into place, pressing gently on each side to ensure the front plate has engaged with the plastic clips on the switch assembly.



N.B. If the decorative front plate needs to be removed place the tip of a screwdriver into one of the slots on either side of the product and gently rotate screwdriver until clip releases front plate.

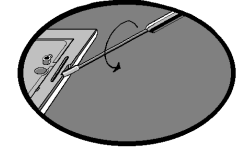
#### REG NUMBER: SCREW

Doyle & Tratt Products Ltd, Carylls Lea, Faygate,  
Horsham, W. Sussex, RH12 4SJ, UK. +44 (0)1293 223333  
Varilight Europe Kft, 2600 Vác, Althann Mihály Frigyes  
utca 2, Hungary.



### Instructions for Fitting Screwless Accessories

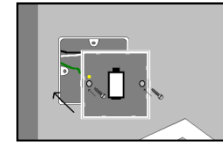
1. After removing from packaging place the product face down onto a soft cloth or towel. Remove the decorative front plate by inserting the tip of a screwdriver into one of the short slots (see diagram) so the screwdriver is between the inside edge of the decorative plate and the outer edge of the clear plastic. Apply gentle pressure and twist the screwdriver one quarter turn (as shown). Lift out switch assembly.



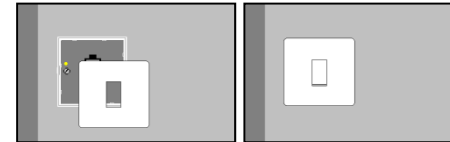
2. Ensure wall is flat around wall box by sanding away any uneven material.

3. Connect wires to appropriate terminals on rear of switch assembly including the earth wire to the earth terminal on the metal back plate.

4. Use fixing screws provided to fix switch assembly onto wall box. Tighten screws evenly a little at a time until just tight enough to prevent movement of the back plate. Do not over-tighten screws as this will deform the plastic clip on the switch assembly, inhibiting the faceplate from being securely fixed.



5. Pick up decorative front plate carefully and push into place, pressing gently on each side to ensure the front plate has engaged with the plastic clips on the switch assembly.



N.B. If the decorative front plate needs to be removed place the tip of a screwdriver into one of the slots on either side of the product and gently rotate screwdriver until clip releases front plate.

#### REG NUMBER: SCREW

Doyle & Tratt Products Ltd, Carylls Lea, Faygate,  
Horsham, W. Sussex, RH12 4SJ, UK. +44 (0)1293 223333  
Varilight Europe Kft, 2600 Vác, Althann Mihály Frigyes  
utca 2, Hungary.

